

Treble Clef

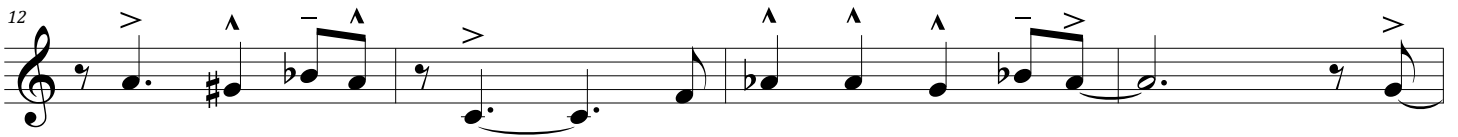
# 2017-18 HS BYJE Audition

All exercises may be played in any octave

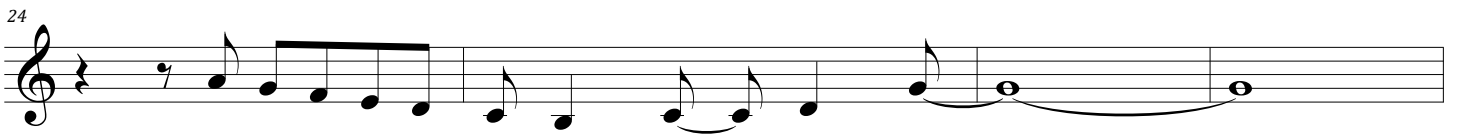
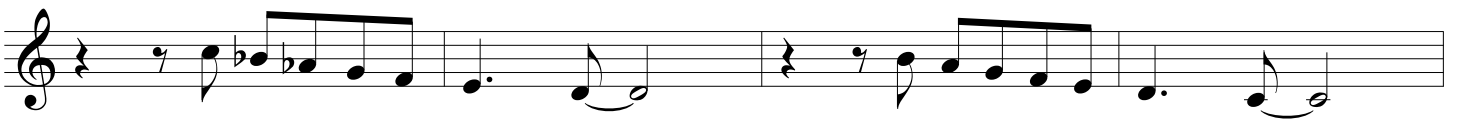
1 ♩ = 160



2 Swing ♩ = 140



3 Bossa Nova ♩ = 120



4

Swing ♩ = 108



Piano Only nos. 5 and 6

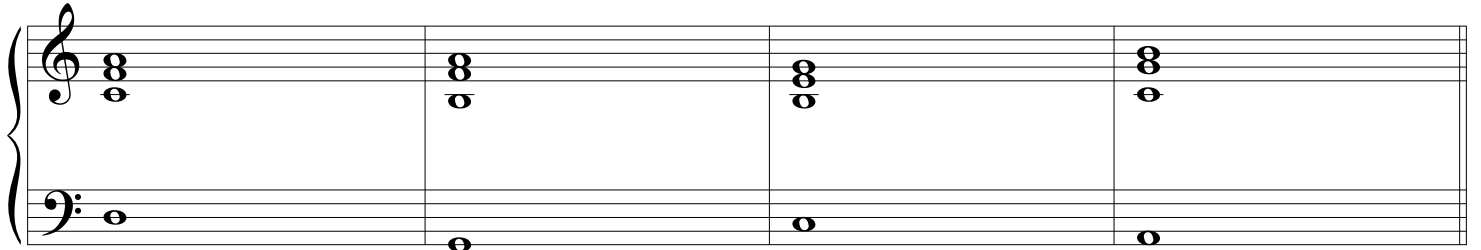
♩ = 160

5

D-7

G<sup>9</sup>C<sup>△</sup>

A-9



6  $\text{♩} = 160$   
 F# $\emptyset$  F-7 E-7 Eb7

57 D-7 G7b9 C $\Delta$

Guitar Only nos. 7 and 8

7  $\text{♩} = 160$   
 D-7 G9 C $\Delta$  A-9

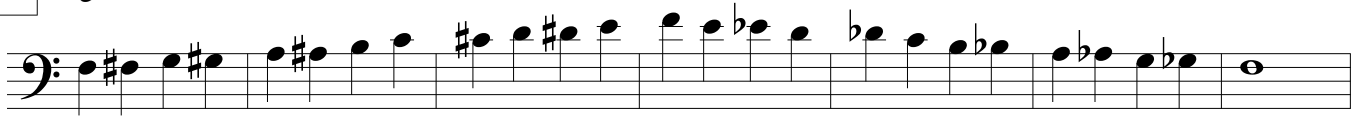
8  $\text{♩} = 160$   
 F# $\emptyset$  F-7 E-7 Eb7

69 D-7 G7b9 C $\Delta$

# 2017-18 HS BYJE Audition

All exercises may be played in any octave

1 ♩ = 160



2 Swing ♩ = 140



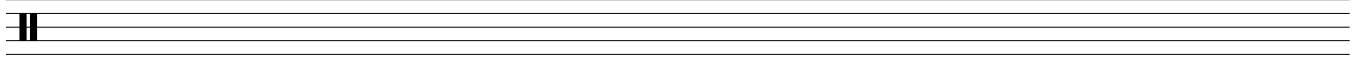
3 Bossa Nova ♩ = 120



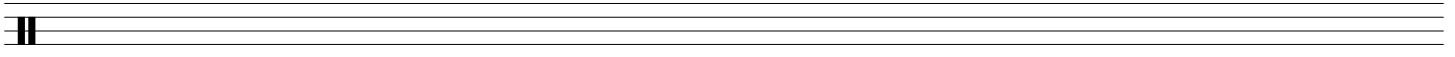


# 2017-18 HS BYJE Audition

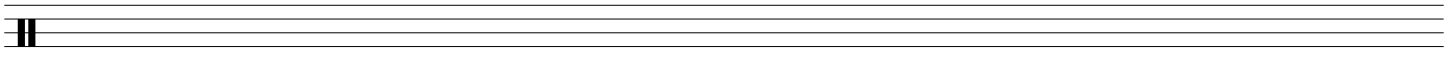
1 Play 8 measure of medium swing



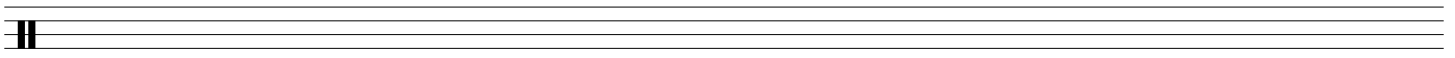
2 Play 8 measure of slow swing



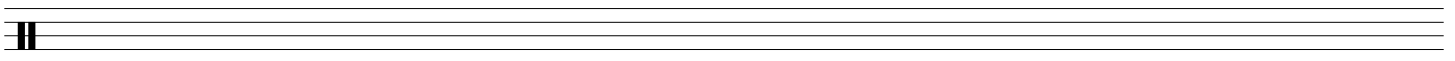
3 Play 4 measure of a ballad with brushes



4 Play 8 measure of a bossa nova



5 Play 8 measure of 12/8 Afro-Cuban



6 Swing ♩ = 140

