

6 $\text{♩} = 120$
 F# \emptyset F-7 E-7 E \flat 7

53 D-7 G7 \flat 9 C Δ

Guitar Only nos. 7 and 8

7 $\text{♩} = 120$
 D-7 G9 C Δ A-9

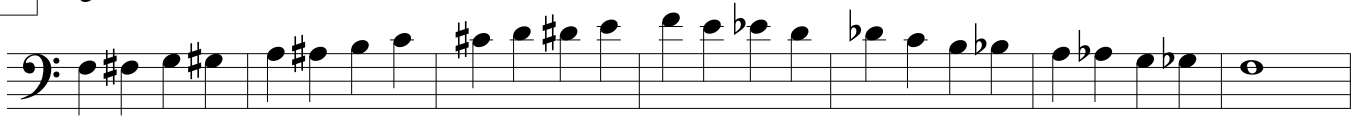
8 $\text{♩} = 120$
 F# \emptyset F-7 E-7 E \flat 7

65 D-7 G7 \flat 9 C Δ

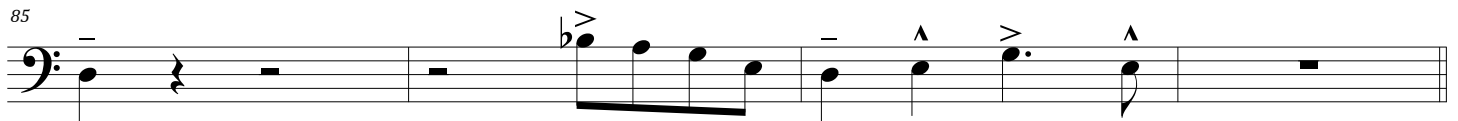
2017-18 BYJE Audition

All exercises may be played in any octave

1 ♩ = 120

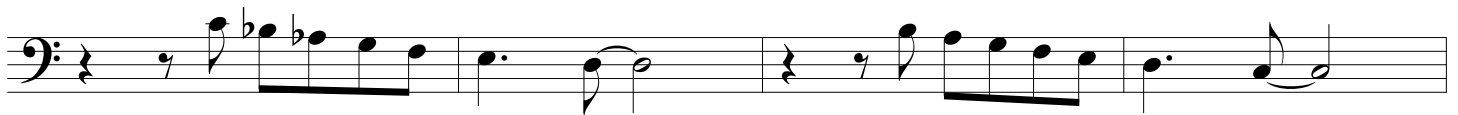


2 Swing ♩ = 112



Bass Players skip nos. 3 and 4

3 Bossa Nova ♩ = 120



4 Swing ♩ = 144

105

109

Bass Players only

5 ♩ = 120

F B \flat 7 F F7

2017-18 BYJE Audition

1

Play 8 bars of medium Swing with sticks

A musical staff with a treble clef and a 4/4 time signature. The staff is empty, with a double bar line at the end.

2

Play 8 bars of medium Swing with brushes

A musical staff with a treble clef and a 4/4 time signature. The staff is empty, with a double bar line at the end.

3

Play 8 bars of a Bossa Nova

A musical staff with a treble clef and a 4/4 time signature. The staff is empty, with a double bar line at the end.

4

Swing ♩ = 112

A musical staff with a treble clef and a 4/4 time signature. The first bar is filled with diagonal slashes. The second bar contains a quarter note with an 'x' above it, followed by an eighth note with an 'x' above it, a quarter rest, a quarter note with an 'x' above it, and an eighth note with an 'x' above it. The third bar is filled with diagonal slashes. The fourth bar contains a quarter rest, a quarter note with an 'x' above it, a quarter note with an 'x' above it, an eighth note with an 'x' above it, and an eighth note with an 'x' above it. The staff ends with a double bar line.

142

A musical staff with a treble clef and a 4/4 time signature. The first bar is filled with diagonal slashes. The second bar contains a quarter note with an 'x' above it, an eighth note with an 'x' above it, an eighth note with an 'x' above it, a quarter rest, an eighth note with an 'x' above it, and an eighth note with an 'x' above it. The third bar is filled with diagonal slashes. The fourth bar contains a half note with a dot above it, followed by a quarter note with a slur above it, a quarter note with a slur above it, and a quarter note with a diamond symbol above it. The staff ends with a double bar line.